



RUTGERS
Office for Research

The Rutgers Office for Research

Michael E. Zwick, Ph.D.
Senior Vice President for Research



RUTGERS

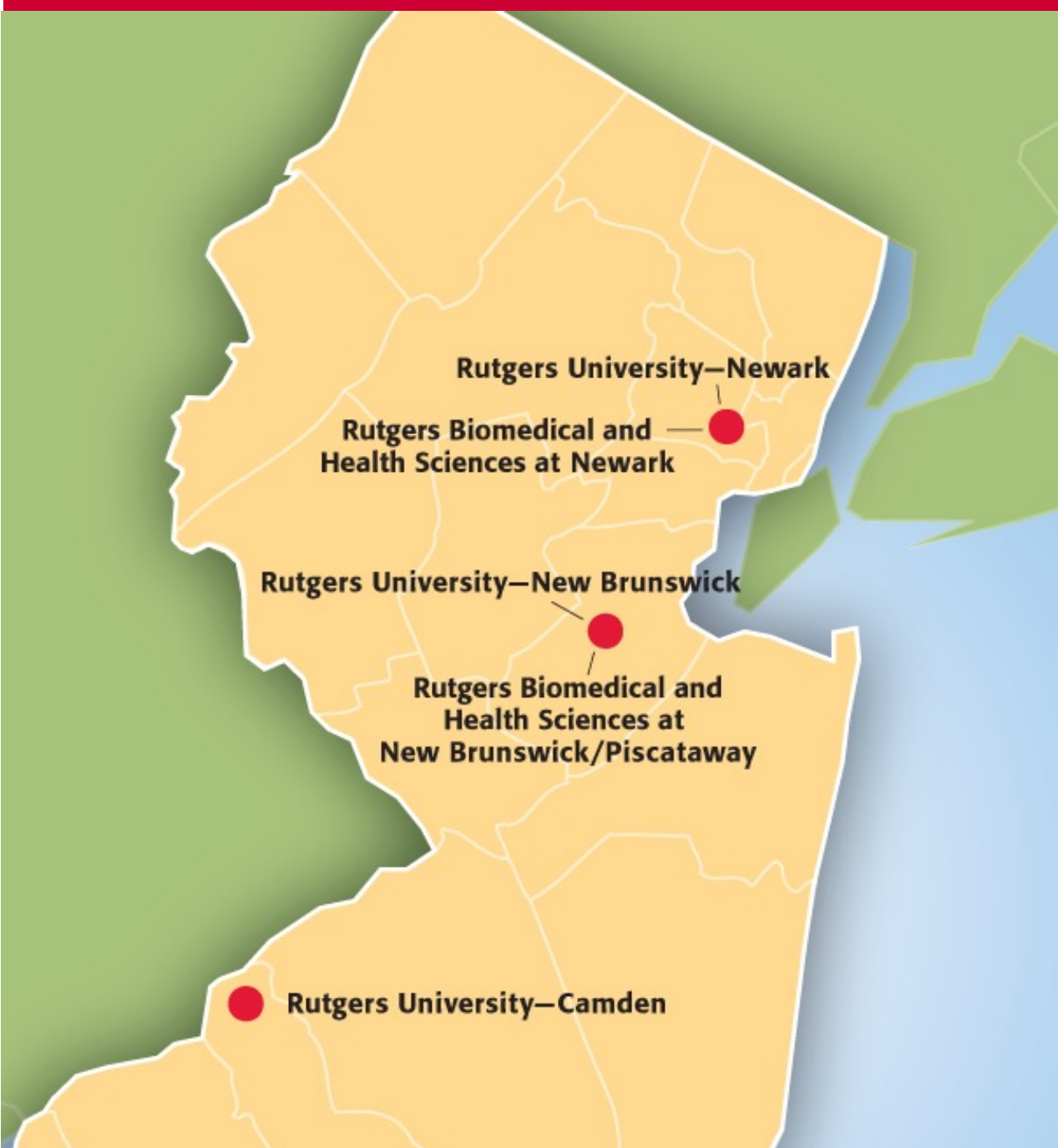
Office of the Executive Vice
President for Academic Affairs

Updated: September 14, 2023



RUTGERS

THE STATE UNIVERSITY
OF NEW JERSEY



research.rutgers.edu

LEADER IN THE STATE

- First in New Jersey and 64th nationally on *Forbes*' list of 500 best large employers in America
- 6,000+ acres across New Jersey
- 900+ buildings spanning 30 million+ square feet
- 300+ research centers and institutions
- 29 decanal units
- 40+ research cores

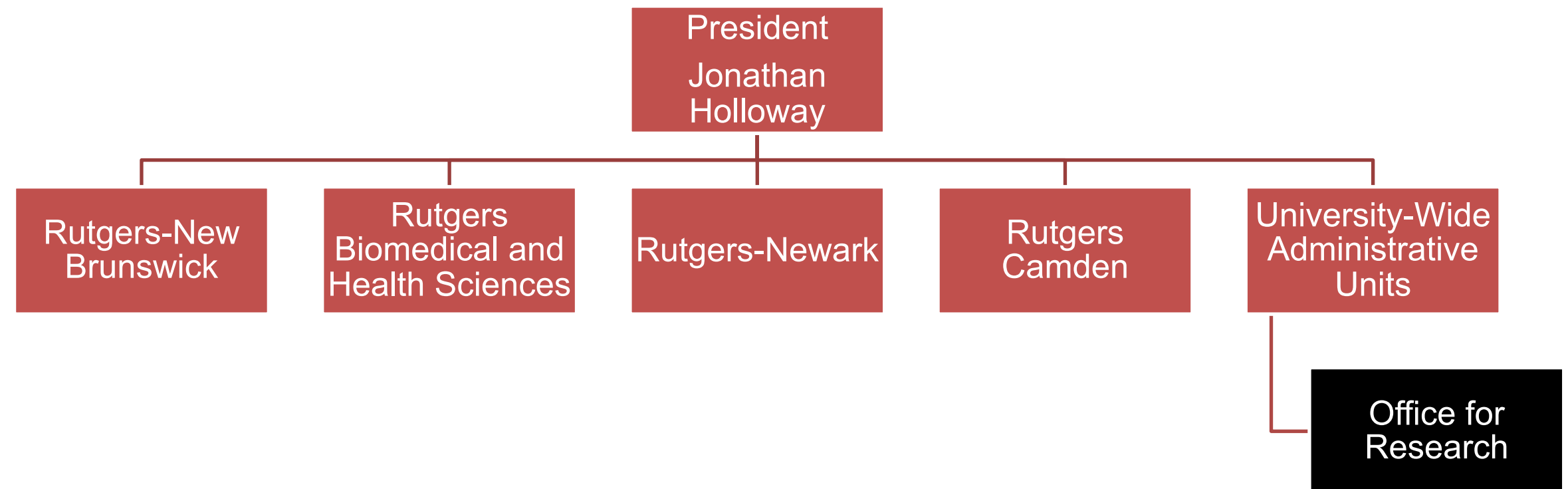
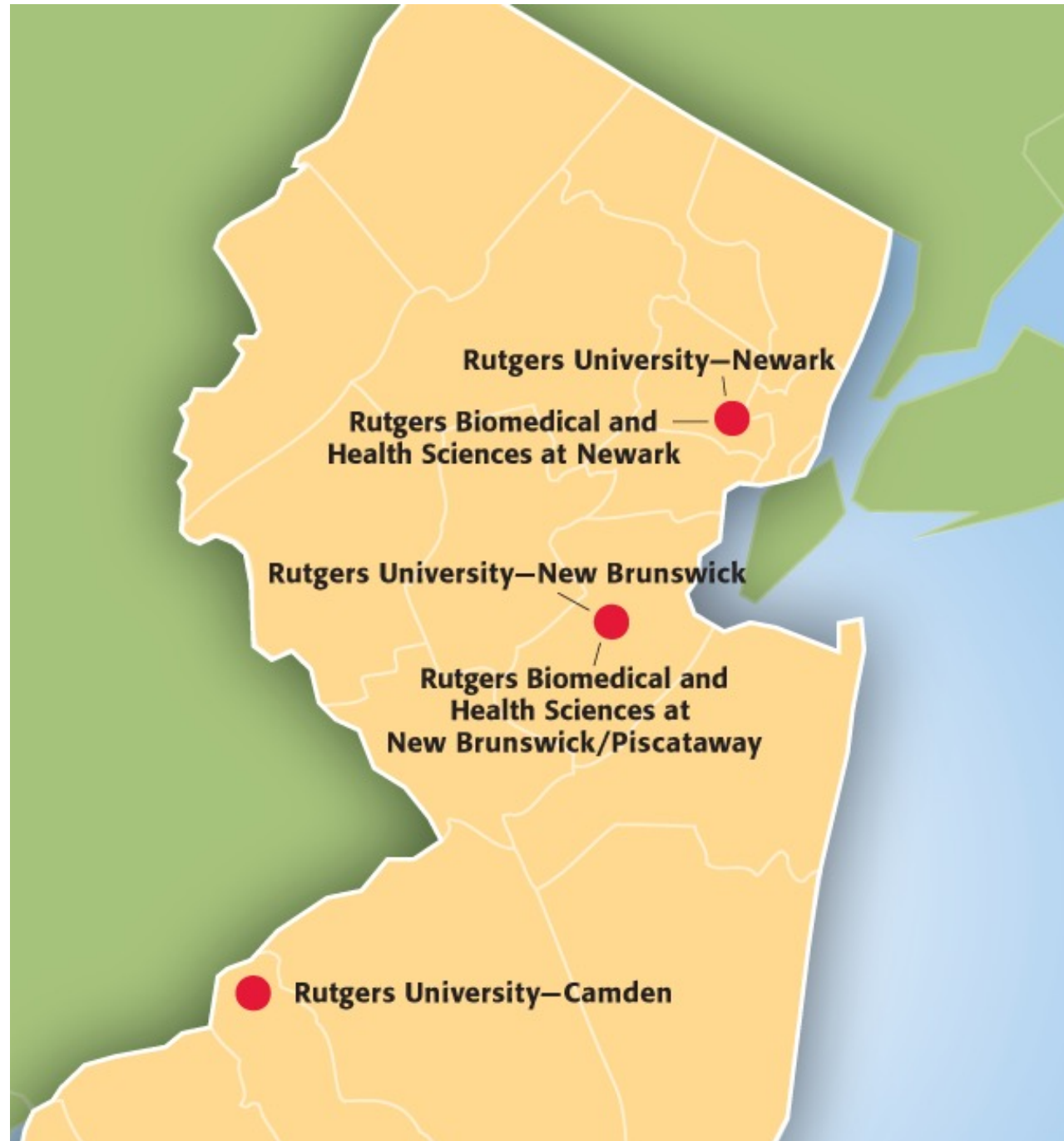
INCLUSIVE AND DIVERSE

- Among the most ethnically diverse campuses in the nation and Big Ten
- 67,620 students representing all 50 states and over 120 countries
- 23,600+ full- and part-time faculty, full- and part-time staff, and international scholars

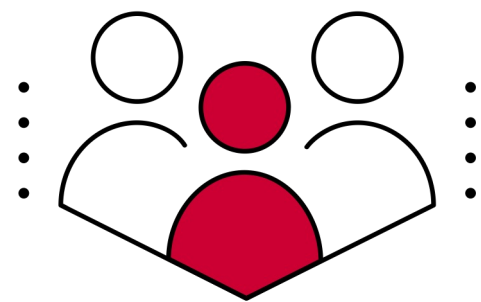
RESEARCH UNIVERSITY

- \$900+ million in sponsored awards funding annually
- \$12M in licensing revenue annually
- ~4,000+ sponsored awards annually
- ~1,600 PIs receiving awards annually
- 1,197 active issued worldwide patents
- 100+ active startups

RUTGERS, THE STATE UNIVERSITY OF NEW JERSEY



OUR GUIDING VALUES



COMMUNITY

The ideal of a **beloved**
community



EXCELLENCE

The relentless pursuit
of **academic excellence**



COMMON GOOD

Serving the **common**
good



RUTGERS

Office for Research
research.rutgers.edu

Our Vision

The Rutgers Office for Research seeks to be the most innovative and trusted research office among all research universities, empowering faculty, students, and staff, to achieve excellence.

Our Mission

Rutgers' Office for Research supports the research, scholarship, and creative endeavors of **ALL** Rutgers faculty.



RUTGERS

Office of the Executive Vice
President for Academic Affairs



RUTGERS

Office for Research
research.rutgers.edu

Our Values

RESPECT

We are transparent and collaborative, treat everyone with dignity and respect, and give every person a voice and opportunity to succeed.

SIMPLICITY

Our services must be as easy to understand and use as possible.

COLLABORATION

We partner and convene to achieve shared goals for the common good.

EXCELLENCE

We strive to be effective, efficient, and innovative in all we do.



RUTGERS

Office of the Executive Vice
President for Academic Affairs

Always Improving



COMPLETED

- ✓ Reorganized the department to maximize effectiveness and reduce overall cost
- ✓ Consolidated the department support functions to reduce cost
- ✓ Restructured the IRB to increase turnaround time and service
- ✓ Provided new data and analyses
- ✓ Developed and implemented new policies (F&A and Patent)
- ✓ Implemented operational efficiencies in Animal Care (6,000 cage increase, only 6 additional FTEs)
- ✓ Launched eCOI+ reducing faculty burden by more than 15,000 notifications per year
- ✓ Implemented AI to reduce needed headcount in Research Contract Services
- ✓ Hosted successful visits by OLAW, USDA, and AAALAC
- ✓ Achieved full AAHRPP accreditation
- ✓ Raised millions annually in external funding to offset the lack of RCM subsidy
- ✓ Established a core services strategy and Universitywide Core Services unit
- ✓ Developed a capital plan to replace aging Animal Care equipment
- ✓ Launched RAPSS phase 2
- ✓ Launched AI use in Animal Care vivaria

PLANNED

- ✓ Integrate pre- and post-award functions
- ✓ Launch of the first-of-its-kind Rutgers Digital Vivarium
- ✓ Launch of the PI checklist
- ✓ Launch of eIRB+
- ✓ Launch of eCOI+ phase 2
- ✓ Launch the NJ Innovation Hub Incubator
- ✓ Launch new faculty-friendly, department-wide website
- ✓ Implement AI in IRB

Office for Research

Senior Vice President for Research



Michael E. Zwick
Senior Vice President



José M. Román
Vice President



Jeetendra Eswaraka
Vice President



Marika Dunn
Executive Director



Deborah Perez-Fernandez
Executive Director



Vincent Smeraglia
Executive Director



Todd Slawsky
Assistant Vice President

Research Administration

122 Staff

Research and Sponsored Programs (Pre-Award)
Research Financial Services (Post-Award)
Research Contract Services
Research Regulatory Affairs
Policy and Training
Funding Notification and Dissemination
Management of Busch Award Program

Universitywide Core Services

129 Staff

Regulatory Compliance/IACUC
Centralized Controlled Substances Program
Veterinary Services
Supports Core Software: iLab
Supports Rutgers Core Services
Oversee Integrated Research Cores: 22 Animal Vivaria; Molecular Imaging; Pathology; Genome Editing; Zebrafish; RBL

Research Relationships

2 Staff

Develop Universitywide Research Partnerships
Coordinate Universitywide Research Intelligence

Technology Transfer

17 Staff

Manage Intellectual Property
Manage the Marketing of New Technology
Facilitate Licensing of Technologies
Agreement Compliance

New Ventures

5 Staff

Establish New Start-Ups
Provide Mentorship for Entrepreneurs
Establish and Operate the Hub Incubator

Finance and Administration

32 Staff

Research Finance
Research Human Resources
Research IT
Data, Analytics and Business Intelligence
Research Communications
Department Administration

Research Relationships



Marika Dunn
Executive Director,
Research
Relationships

2FTEs

Universitywide Research Partnerships

- Seek new and manage existing relationships.
 - Develop strategies to engage external stakeholders in Rutgers research.
-

Coordinate Universitywide Research Intelligence

- Manage efforts to identify intelligence through research relationships.

Research Administration



José M. Román

Vice President,
Research
Administration

122 FTEs

UNIVERSITY-WIDE APPLICATIONS

RAPSS
eCERT
eIRB
eCOI+
Pivot
InfoReady

Research & Sponsored Programs (Pre-Award)

- Guides faculty through proposal review, submission, and award setup including subawards
- Provides educational programs for faculty and staff
- Policy development and training

Research Financial Services (Post-Award)

- Performs central financial accounting and reporting for sponsored research
- Provides post-award administration support for sponsored programs and other restricted funds
- Coordinates effort certification processes

Research Regulatory Affairs

- Assists research faculty, administrators and staff comply with local, state and national laws and regulations
- Promotes the responsible conduct of research through education, training and certification

Research Contract Services

- Reviews, drafts and negotiates all research-related material transfer agreements, data use agreements, nondisclosure agreements (NDAs, CDAs), and all research contracts

3,500+
Award
Submissions
Annually

8,000+
Active Awards
Managed

6,800+
IRB Reviews
Annually

2,000+
Contracts
Executed
Annually

Universitywide Core Services



Jeetendra Eswaraka

Vice President,
Universitywide Core
Services

129 FTEs

UNIVERSITY-WIDE APPLICATIONS

eIACUC
Digital Vivarium
iLab

Regulatory Compliance

- Institutional Animal Care and Use (IACUC) Administration
- University-wide Controlled Substances Program
- All facilities are USDA-registered and accredited by AALACi and comply with all relevant government regulations

Comparative Medicine

- Husbandry and facility operations for \$85M in sponsored research
- Daily Veterinary Care of all animals
- 21 animal facilities across all three campuses
- Offer a variety of surgical and non-surgical services

Specialized Animal Core Services

- Genome Editing Core Facility
- Gnotobiotic Facility
- In Vivo Research Services
- Zebra Fish Facility
- Two ABSL-3 facilities (ICPH and RBL)

27,000
Animal cages

275,000
Sqft. of space
managed

Support University-Wide Core Services

- Focuses on improving Core Services by managing software that tracks usage of core services
- Coordinates equipment requests from across the institution
- Provides equipment grants to purchase new equipment, vouchers to encourage research use of University Core Services, and offers limited matching funding for equipment grant awards

Manage Universitywide Cores

- Molecular Design and Synthesis
- Molecular Imaging Core
- Research Pathology Services

Technology Transfer



Debra Perez-Fernandez
Acting Executive Director,
Innovation Ventures

17 FTEs

Intellectual Property

- Transition of research to commercial viability
- IP process and timelines
- IP-related compliance and protection

170+
Invention
Disclosures
Annually

Licensing

- Evaluates Notice of Inventions
- Performs industry outreach
- Negotiates agreements

80
Licensing
Agreements
Signed Per
Year

Compliance

- Performs agreement compliance
- Collects and distributes licensing revenue

800+
Total
Agreements
in Portfolio

New Ventures



Vincent Smeraglia
Executive Director,
New Ventures

5 FTEs

New Ventures

- Supports faculty startups
- Manages TechAdvance & HealthAdvance commercialization funding
- Seeks opportunities to enhance the start-up ecosystem.

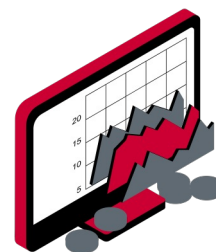
100+
Start-ups
Launched

Finance and Administration



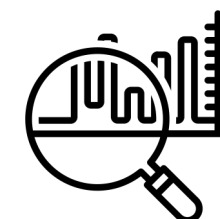
Todd Slawsky
Executive Director,
Finance &
Administration

32 FTEs



Finance

Responsible for the management of the department's budget and finances and ensures compliance with all university business policies and procedures.



Research Analytics & Systems

Source of universitywide research-related data and includes data integrity, metrics that support data-informed decisions, developing dashboards, and assisting and/or leading the construction, upgrading, and integration of research-servicing systems.

Research Comms & Marketing

Raises the visibility and profile of Rutgers research and brings its impact to life for key audiences through internal and external communications, media relations, digital channels, advertising and marketing.



Human Resources

Manages the employee life cycle, including onboarding, development, and performance management. Provides consultation to management on strategic staffing plans, career paths, job design and compensation, and labor relations.



Information Technology

Provides desktop support, develops and/or manages systems and processes for research operations.

Office of Advanced Research Computing

A Collaboration Between Office for Research and the Office of Information Technology



Frank Reda
Acting Associate Vice President, Advanced Research Computing

21 FTEs

Sponsored Project and Consultative Support

- Assists faculty with developing grants proposals that include advanced computing
- Assists faculty with the analysis of their research data
- Answers faculty questions related to advanced research computing

Manages Advanced Cyber Infrastructure

- Hosts and manages Amarel computing environment
- Hosts and manages RU-NET environment
- Supports research tools related to advanced research computing
- Network and IT support for researchers

Education, Training and Outreach

- Offer computing workshops to researchers

4,200+ Amarel Users

\$64M+ Grant Dollars OARC Has Helped Secure

1.89 Quadrillion Mathematical Operations Per Second Capacity

OfR's Key Research Compliance Functions



Hila Berger

Assistant Vice President,
Research Regulatory Affairs

Human Research Protection Program

IRB

Quality Assurance &
Evaluation

Reliance and Collaborations

DRAFT/Pre-review and
Exempt Review

Education and Outreach

Clinical Trials Compliance

Export Compliance

Export Controls Compliance

VSA & Travel Compliance

MTA Compliance

Foreign Influence Compliance

Research Integrity

Responsible Conduct of
Research Training

Conflict of Interest Compliance

Research Misconduct
Investigations

OfR's Key Research Compliance Functions



Lamar Oglesby

Executive Director,
Research Financial Services

Sponsored Award Financial Compliance

Compliance With Award
Agreements

Effort Certification

Support With Single Audit



**Deborah
Perez-Fernandez**

Executive Director,
Technology Transfer

Technology Transfer

Compliance with Bayh Dole
Act

Licensing Contract
Compliance



Jeetendra Eswaraka

Vice President,
Universitywide Core
Services

Rutgers Animal Care

IACUC

Controlled Substance Program
in Animal Research

Comparative Medicine
Resources

Research Core Services

Questions and Open Discussion



Follow us @RutgersResearch

research.rutgers.edu